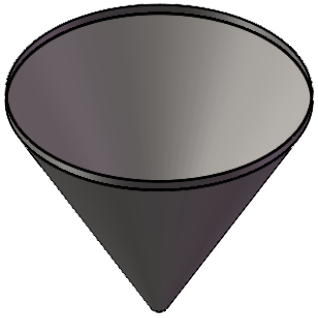
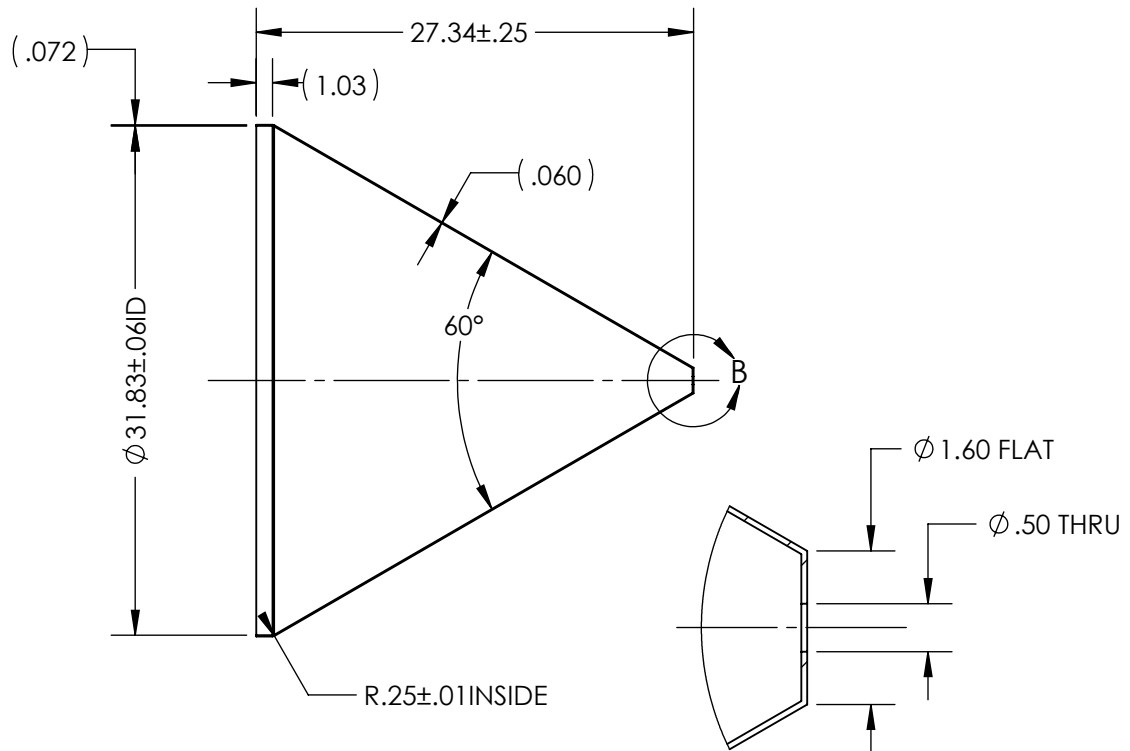
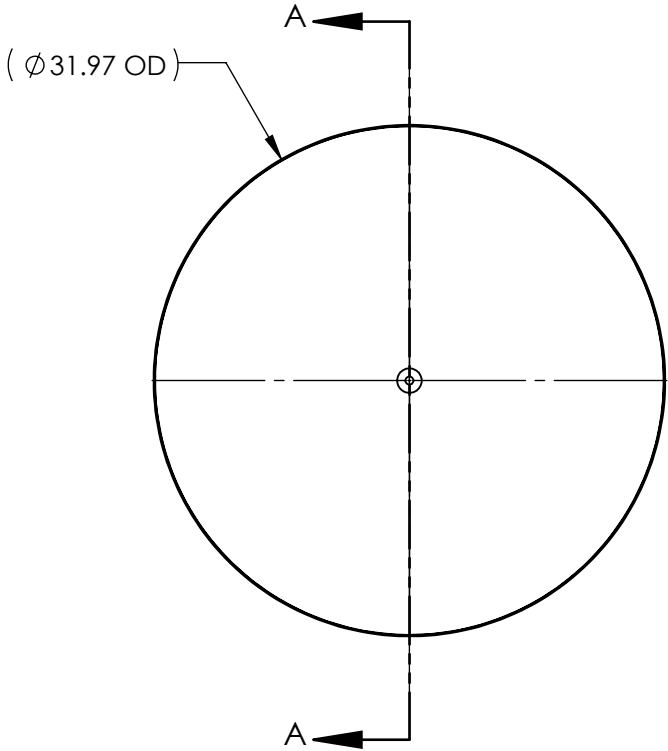


**NOTES UNLESS OTHERWISE SPECIFIED**

- 1. PARENT MATERIAL: 304 STAINLESS STEEL, 11 GAUGE (0.120" THICK)
- 2. PART IS SEAMLESS, FORMED FROM SHEET METAL WITHOUT WELDS.
- 3. FINISH: NO METAL FINISHING REQUIRED. THE FINAL FINISH SHALL BE THE RESULT OF THE PROCESSES USED TO FABRICATE THE SHAPE, RESULTING IN AN ESTIMATED SURFACE ROUGHNESS OF 80 Ra.
- 4. ESTIMATED INTERNAL VOLUME: 35.44 GALLONS. (8186.10 INCH<sup>3</sup>)

REV.	DESCRIPTION	DATE	APPROVED
A	INITIAL RELEASE FOR MANUFACTURING	19SEP2017	B.KEEL
B	CHANGED STR WALL FROM 7.00" TO 1.00"	07JAN2015	B.KEEL
C	UPDATED SHEET FORMAT, CHANGED ID FROM 31.83" TO 31.80", ADDED 0.25" TOLERANCE TO FLAT DIMENSION, ADDED 0.25" TOLERANCE TO OVERALL HEIGHT DIMENSION.	MAR2019	R.DAVIS
D	UPDATED DRAWING TO THE CURRENT FORMAT	07JUL2020	K.DRUMHILLER
E	ADDED MATERIAL THICKNESS DIMENSIONS	12/13/2021	M. BODETTE



SECTION A-A

DETAIL B  
SCALE 1 : 2

UNLESS OTHERWISE SPECIFIED: 1. DO NOT SCALE DRAWING 2. DIMENSIONS ARE IN INCHES 3. TOLERANCE: FRACTIONAL ± .25 X.X ± .1 X.XX ± .03 X.XXX ± .010 ANGULAR: ± 2 DEG. 4. INTERPRET DRAWING PER ASME-Y14.5M-1994 STANDARDS 5. THIRD ANGLE PROJECTION 6. REMOVE BURRS & BREAK ALL SHARP EDGES WITH R0.03 ± 0.2	NAME	DATE	<b>TOLEDO METAL SPINNING EST. 1929</b>  TITLE: <b>32" HOPPER WITH 1" STRAIGHT WALL</b>	
	DRAWN	K.SCRIVENER		19SEP2017
	<b>PROPRIETARY AND CONFIDENTIAL</b>			
	THE INFORMATION CONTAINED WITHIN THIS DRAWING IS THE SOLE PROPERTY OF TOLEDO METAL SPINNING COMPANY. ANY REPRODUCTION IN PART OR AS A WHOLE WITHOUT WRITTEN PERMISSION OF TOLEDO METAL SPINNING COMPANY IS PROHIBITED.			
SIZE	DRAWING NUMBER	REV		
A	<b>TMS32111</b>	<b>E</b>		
SCALE: 1:12		WEIGHT:	SHEET 1 OF 1	