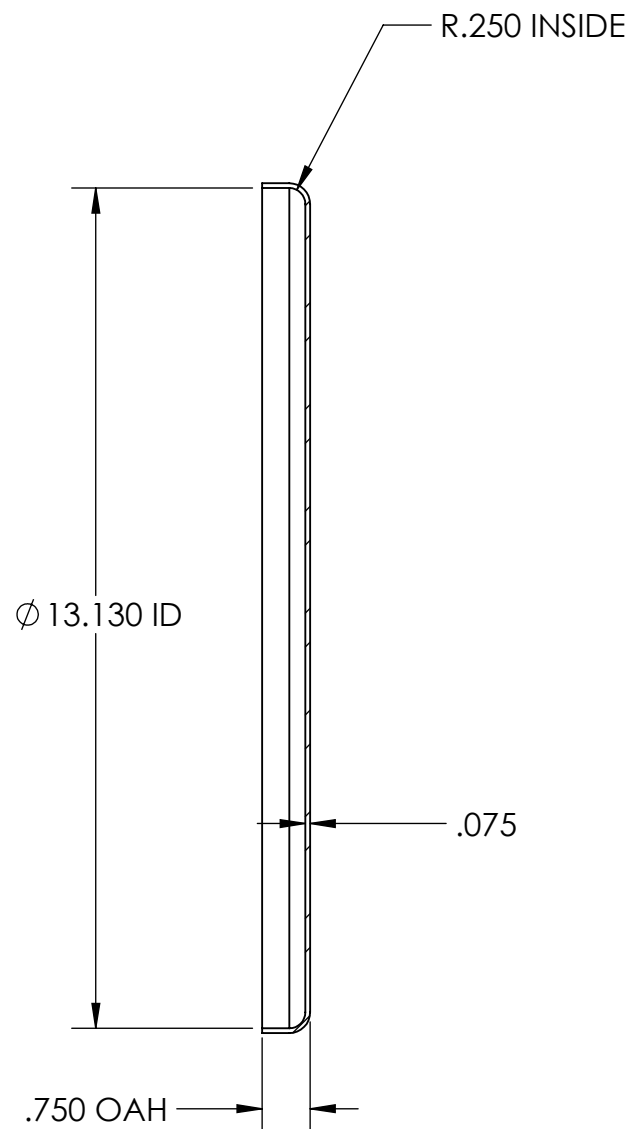
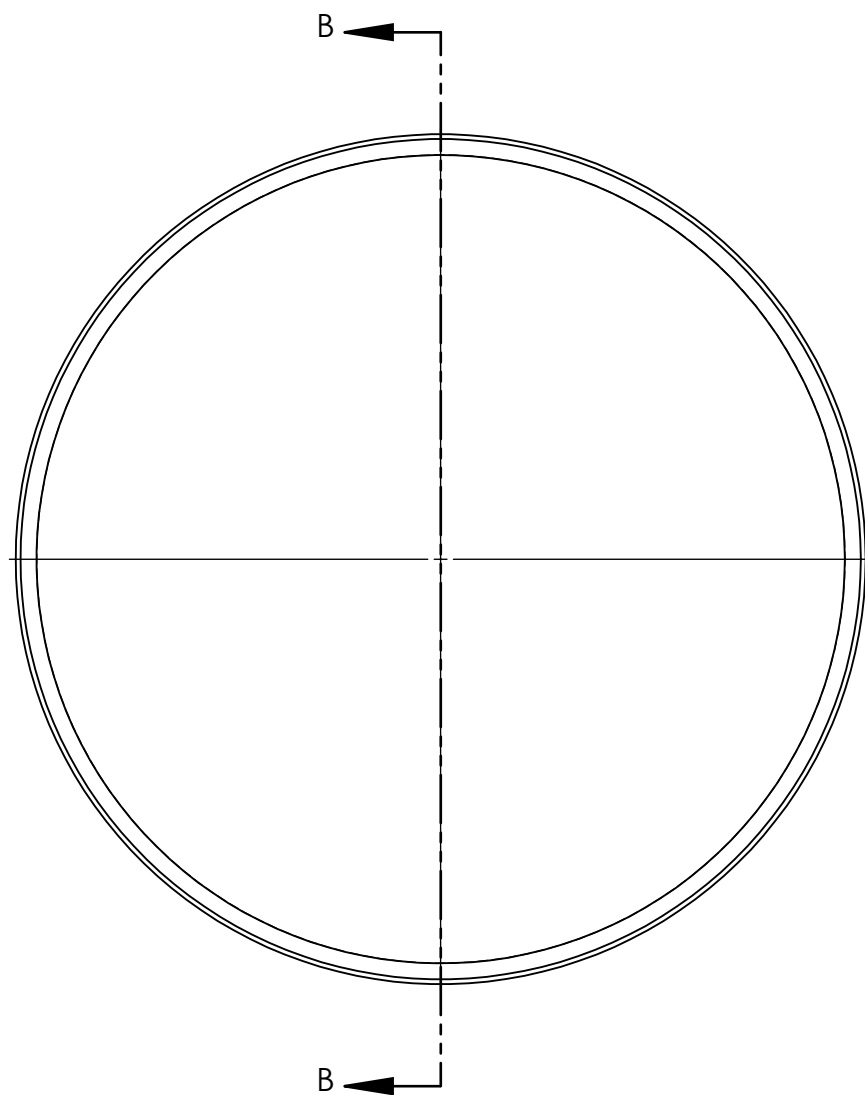


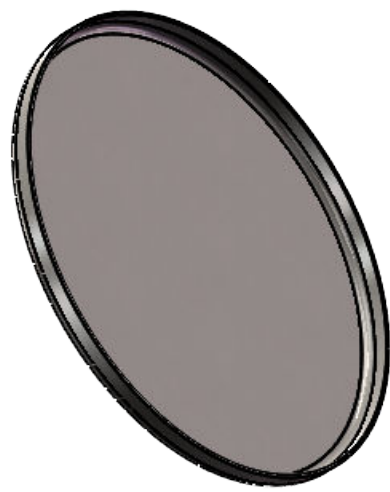
NOTES UNLESS OTHERWISE SPECIFIED

1. PARENT MATERIAL: 304 STAINLESS STEEL, 14 GAUGE (0.075" THICK)
2. PART IS SEAMLESS, FORMED FROM SHEET METAL WITHOUT WELDS.
3. FINISH: NO METAL FINISHING REQUIRED. THE FINAL FINISH SHALL BE THE RESULT OF THE PROCESSES USED TO FABRICATE THE SHAPE, RESULTING IN AN ESTIMATED SURFACE ROUGHNESS OF 80 Ra.

REVISIONS			
REV.	DESCRIPTION	DATE	APPROVED
00	PRELIMINARY COPY - NOT RELEASED FOR MANUFACTURING	DEC2001	J. KNAPP
A	UPDATED TO 14 GA (.075")	18OCT2022	A. FULKERT



SECTION B-B
SCALE 1 : 3



UNLESS OTHERWISE SPECIFIED:
 1. DO NOT SCALE DRAWING
 2. DIMENSIONS ARE IN INCHES
 3. TOLERANCE:
 FRACTIONAL $\pm .25$
 X.X $\pm .1$
 X.XX $\pm .03$
 X.XXX $\pm .010$
 ANGULAR: ± 2 DEG.
 4. INTERPRET DRAWING PER ASME-Y14.5M-1994 STANDARDS
 5. THIRD ANGLE PROJECTION
 6. REMOVE BURRS & BREAK ALL SHARP EDGES WITH R0.03 $\pm .02$

	NAME	DATE
DRAWN	J. ASHBY	18OCT2022
CHECKED		
ENG APPR.		
MFG APPR.		
Q.A.		

PROPRIETARY AND CONFIDENTIAL
 THE INFORMATION CONTAINED WITHIN THIS DRAWING IS THE SOLE PROPERTY OF TOLEDO METAL SPINNING COMPANY. ANY REPRODUCTION IN PART OR AS A WHOLE WITHOUT WRITTEN PERMISSION OF TOLEDO METAL SPINNING COMPANY IS PROHIBITED.

TOLEDO METAL SPINNING EST. 1929		
TITLE: TMS 304SS LID		
SIZE	DRAWING NUMBER	REV
B	TMSL1214	A
SCALE: 1:4	WEIGHT: 3.50	SHEET 1 OF 1